



COMPASS

Manhattan Luxury Report

Jun 22 - 28, 2026, Residential Contracts \$5M+

Photo: [166 Perry Street, Unit 5A](#)

The Manhattan luxury real estate market, defined as all properties priced \$5M and above, saw 18 contracts signed this week, made up of 11 condos, 6 co-ops, and 1 house. The previous week saw 16 deals.

For more information or data, please reach out to a Compass agent.

\$8,838,889

Average Asking Price

\$6,872,500

Median Asking Price

\$2,430

Average PPSF

3%

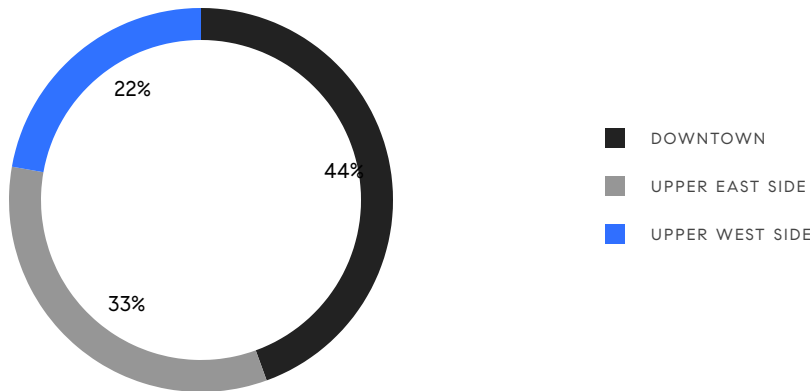
Average Discount

\$159,100,000

Total Volume

158

Average Days On Market



11

Condo Deal(s)

6

Co-op Deal(s)

1

Townhouse Deal(s)

\$9,750,910

Average Asking Price

\$7,040,000

Average Asking Price

\$9,600,000

Average Asking Price

\$6,750,000

Median Asking Price

\$6,247,500

Median Asking Price

\$9,600,000

Median Asking Price

\$2,649

Average PPSF

\$1,869

Average PPSF

3,789

Average SqFt

5,139

Average SqFt

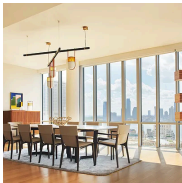


108 Leonard Street, Unit PHW

Contract Signed

Tribeca

Type	Condo	Price	\$19,250,000	Sq. Ft.	8,770	Beds	5
DOM	-	Initial	\$19,250,000	PPSF	\$2,195	Baths	7



565 Broome Street, Unit S28A

Contract Signed

Soho

Type	Condo	Price	\$18,995,000	Sq. Ft.	4,682	Beds	4
DOM	428	Initial	\$20,950,000	PPSF	\$4,058	Baths	5.5

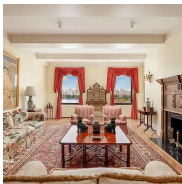


67 Irving Place, Unit 11

Contract Signed

Flatiron District

Type	Condo	Price	\$12,250,000	Sq. Ft.	3,432	Beds	4
DOM	1	Initial	\$12,250,000	PPSF	\$3,570	Baths	4.5

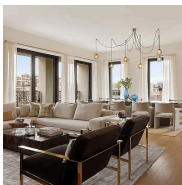


1107 5th Avenue, Unit 9N

Contract Signed

Carnegie Hill

Type	Coop	Price	\$11,500,000	Sq. Ft.	-	Beds	4
DOM	171	Initial	\$12,500,000	PPSF	-	Baths	4



39 West 23rd Street, Unit PH20

Contract Signed

Flatiron District

Type	Condo	Price	\$9,950,000	Sq. Ft.	3,194	Beds	4
DOM	280	Initial	\$10,995,000	PPSF	\$3,116	Baths	4



53 West 71st Street

Contract Signed

Lincoln Square

Type	Townhouse	Price	\$9,600,000	Sq. Ft.	5,139	Beds	5
DOM	145	Initial	\$10,395,000	PPSF	\$1,869	Baths	4

Compass is a licensed real estate broker and abides by Equal Housing Opportunity laws. All material presented herein is intended for informational purposes only. Information is compiled from sources deemed reliable but is subject to errors, omissions, changes in price, condition, sale, or withdrawal without notice. No statement is made as to the accuracy of any description. All measurements and square footages are approximate. This is not intended to solicit property already listed. Nothing herein shall be construed as legal, accounting or other professional advice outside the realm of real estate brokerage.



60 Riverside Boulevard, Unit 3501/3502

Contract Signed

Lincoln Square

Type	Condo	Price	\$8,650,000	Sq. Ft.	4,350	Beds	6
DOM	343	Initial	\$9,250,000	PPSF	\$1,989	Baths	7

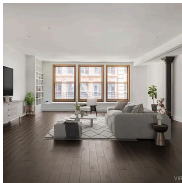


1155 Park Avenue, Unit 12NW

Contract Signed

Carnegie Hill

Type	Coop	Price	\$7,950,000	Sq. Ft.	3,410	Beds	5
DOM	76	Initial	\$7,950,000	PPSF	\$2,332	Baths	6



101 Wooster Street, Unit 3F/4F

Contract Signed

Soho

Type	Coop	Price	\$6,995,000	Sq. Ft.	4,200	Beds	2
DOM	73	Initial	\$6,995,000	PPSF	\$1,666	Baths	3

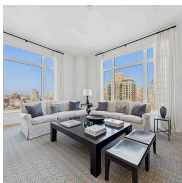


27 West 72nd Street, Unit 201

Contract Signed

Upper West Side

Type	Condo	Price	\$6,750,000	Sq. Ft.	3,200	Beds	4
DOM	-	Initial	\$6,750,000	PPSF	\$2,110	Baths	3.5

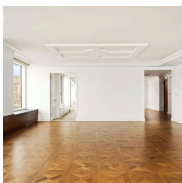


200 East 83rd Street, Unit 26B

Contract Signed

Yorkville

Type	Condo	Price	\$6,650,000	Sq. Ft.	1,900	Beds	3
DOM	134	Initial	\$6,750,000	PPSF	\$3,500	Baths	3



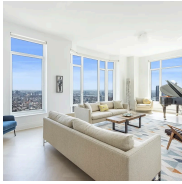
240 Riverside Boulevard, Unit 23AC

Contract Signed

Upper West Side

Type	Condo	Price	\$6,600,000	Sq. Ft.	4,456	Beds	4
DOM	-	Initial	\$6,600,000	PPSF	\$1,481	Baths	5

Compass is a licensed real estate broker and abides by Equal Housing Opportunity laws. All material presented herein is intended for informational purposes only. Information is compiled from sources deemed reliable but is subject to errors, omissions, changes in price, condition, sale, or withdrawal without notice. No statement is made as to the accuracy of any description. All measurements and square footages are approximate. This is not intended to solicit property already listed. Nothing herein shall be construed as legal, accounting or other professional advice outside the realm of real estate brokerage.



30 Park Place, Unit 69B

Tribeca

Type	Condo	Price	\$6,500,000	Sq. Ft.	2,631	Beds	3
DOM	71	Initial	\$7,250,000	PPSF	\$2,471	Baths	3

Contract Signed



515 West 18th Street, Unit 1010

West Chelsea

Type	Condo	Price	\$6,395,000	Sq. Ft.	2,418	Beds	3
DOM	134	Initial	\$6,495,000	PPSF	\$2,645	Baths	3.5

Contract Signed



1090 Park Avenue, Unit 15A

Carnegie Hill

Type	Coop	Price	\$5,500,000	Sq. Ft.	-	Beds	4
DOM	103	Initial	\$5,500,000	PPSF	-	Baths	4

Contract Signed



133 East 64th Street, Unit 7A

Lenox Hill

Type	Coop	Price	\$5,295,000	Sq. Ft.	3,675	Beds	4
DOM	151	Initial	\$5,295,000	PPSF	\$1,441	Baths	3

Contract Signed

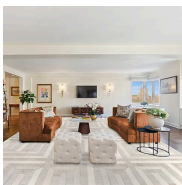


456 West 19th Street, Unit 6/7DE

West Chelsea

Type	Condo	Price	\$5,270,000	Sq. Ft.	2,636	Beds	3
DOM	92	Initial	\$5,270,000	PPSF	\$2,000	Baths	2

Contract Signed



875 5th Avenue, Unit 12EF

Lenox Hill

Type	Coop	Price	\$5,000,000	Sq. Ft.	-	Beds	4
DOM	161	Initial	\$5,200,000	PPSF	-	Baths	4

Contract Signed

Compass is a licensed real estate broker and abides by Equal Housing Opportunity laws. All material presented herein is intended for informational purposes only. Information is compiled from sources deemed reliable but is subject to errors, omissions, changes in price, condition, sale, or withdrawal without notice. No statement is made as to the accuracy of any description. All measurements and square footages are approximate. This is not intended to solicit property already listed. Nothing herein shall be construed as legal, accounting or other professional advice outside the realm of real estate brokerage.